

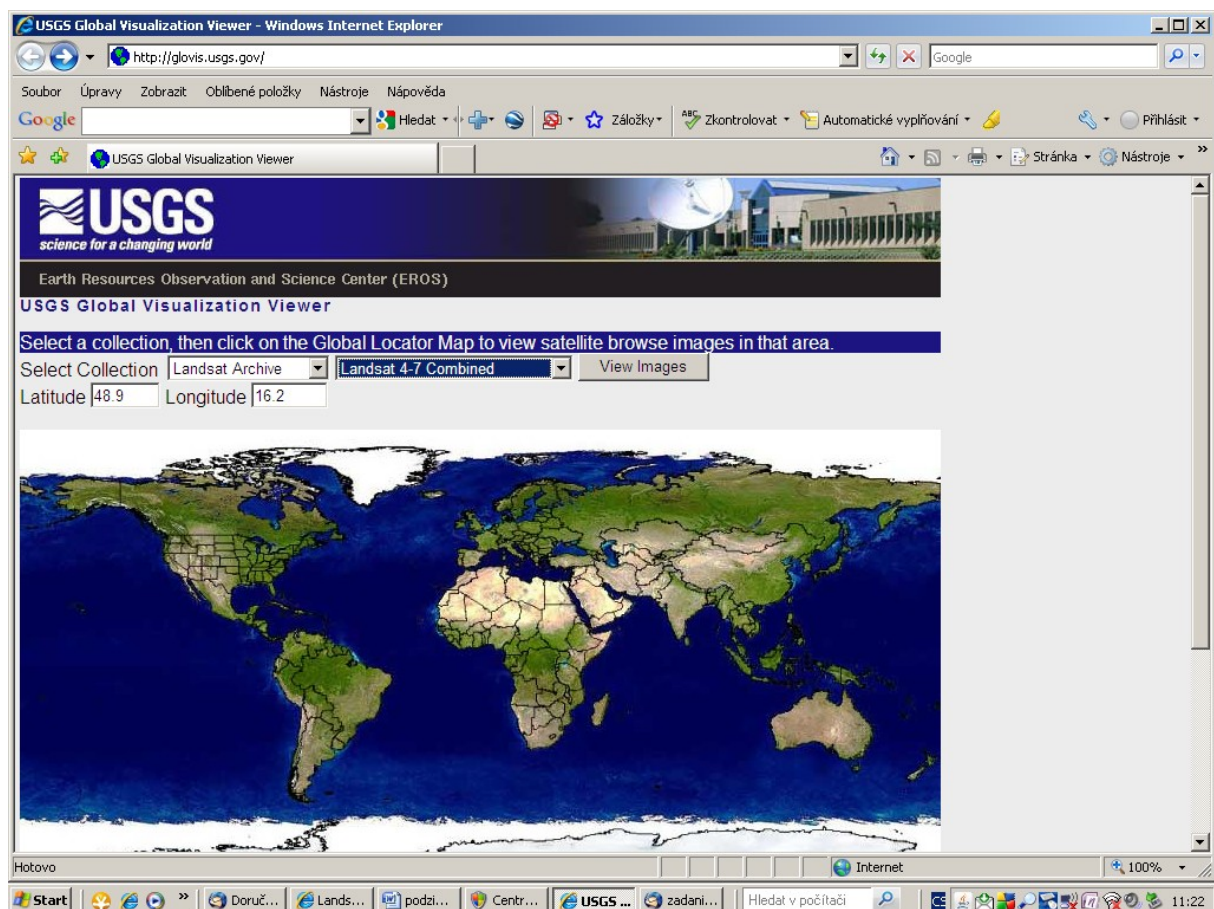
cvičení YZD1- příprava dat z Landsatu -free data od USGS

Stránka USGS (United States Geological Survey)

1. Data zdarma: přejít na <http://eros.usgs.gov/>
2. http://landsat.usgs.gov/products_data_at_no_charge.php.

Landsat scenes can be requested and downloaded from Glovis (<http://glovis.usgs.gov>) or EarthExplorer (<http://earthexplorer.usgs.gov>).

More details on the Standard Terrain Corrected (Level 1T) data currently available can be found at <http://eros.usgs.gov/products/satellite/landsat7.php>



3. Vybrat území - červená tečka

USGS Global Visualization Viewer - Windows Internet Explorer

http://glovis.usgs.gov/ImgViewer/ImgViewer.html?limitMissions=FALSE&mission=LANDSAT_ARCHIVE&sensor=COMBINED&la...

Soubor Úpravy Zobrazit Oblíbené položky Nástroje Nápověda

Google Hledat Zkontrolovat Automatické vyplňování Přihlásit

USGS Global Visualization Viewer

USGS
Earth Resources Observation and Science Center (EROS)

USGS Global Visualization Viewer

Attention:

GloVis uses popup windows to implement some features. It appears that your browser has popup windows blocked for the GloVis web site. Please modify your browser configuration to allow popups for the GloVis site. After modifying the configuration, click [here](#) to retest.

If you believe the popup blocking detection is in error, continue to the GloVis site by clicking [here](#).

DOI USGS HOME Biology Geography Geology Water

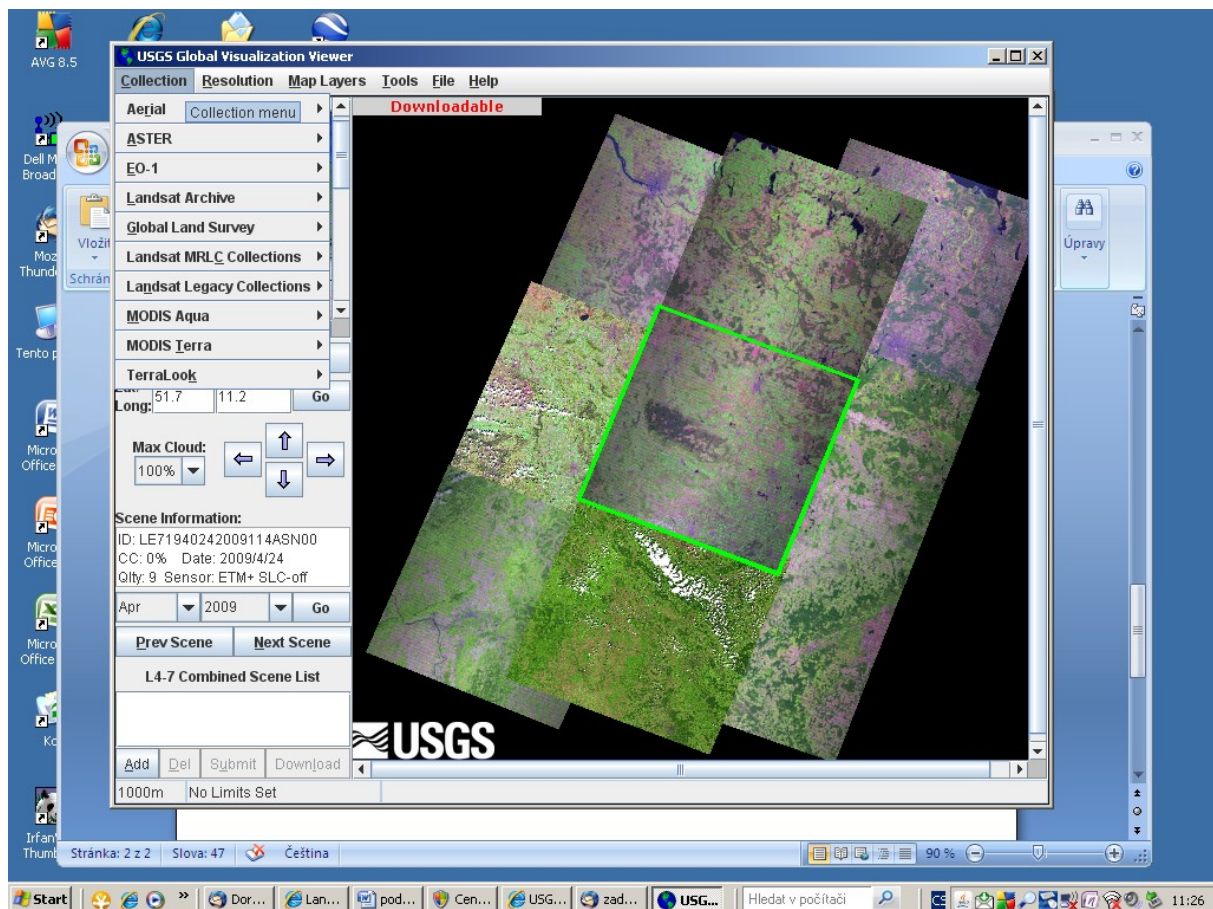
Accessibility FOIA Privacy Policies and Notices Disclaimer

U.S. Department of the Interior | U.S. Geological Survey
URL: <http://glovis.usgs.gov/ImgViewer/ImgViewer.html>
Contact Information: custserv@usgs.gov | ASTER and MODIS questions: lpdaac@eos.nasa.gov
Page Last Modified: 09/10/09

USA.gov TAKE PRIDE IN AMERICA

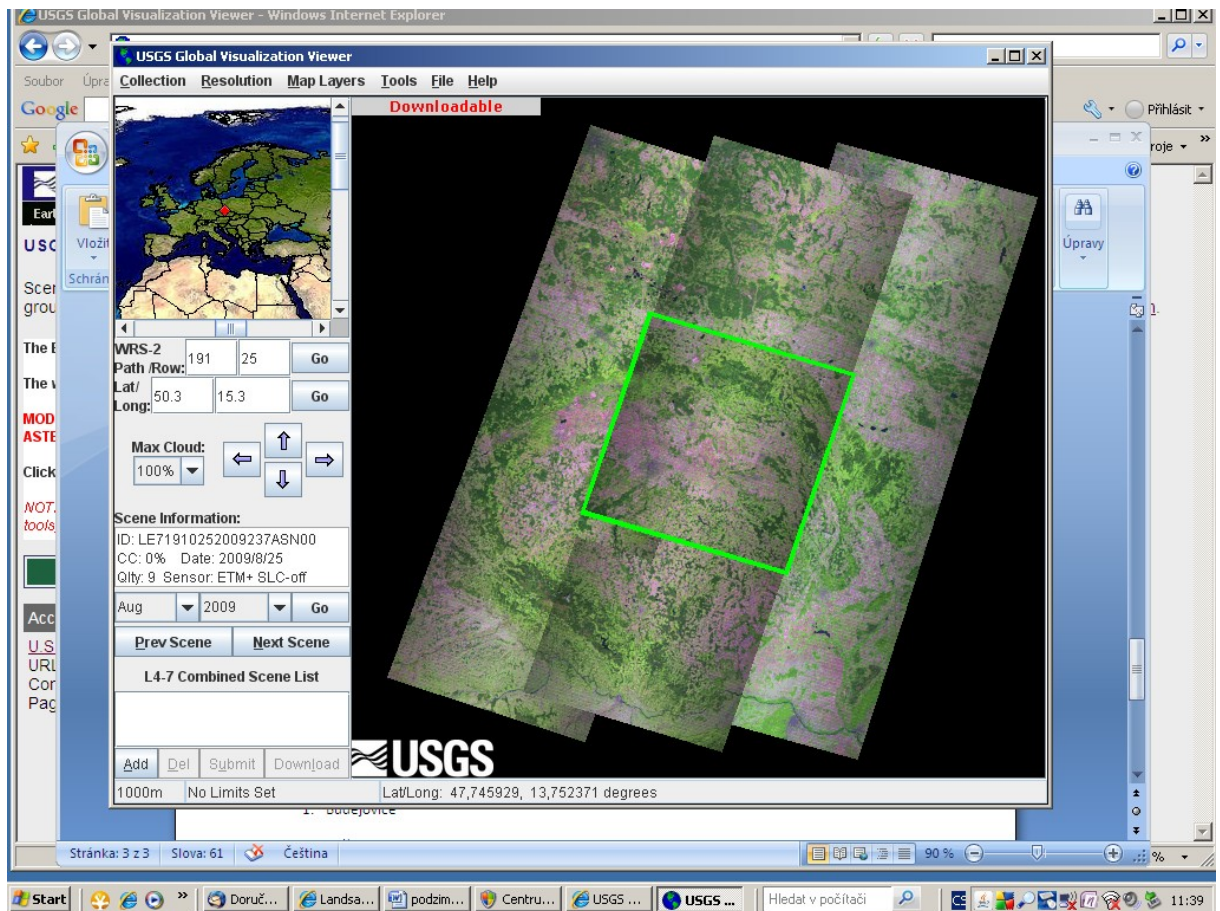
Start Doruč... Lands... podzi... Centr... USGS ... zadani... Hledat v počítači 11:23

4. Zvolit



5. Vybrat data Landsat 4 – 7

- Budějovice - 8 studentů
- Kolín - 7 studentů
- Mladá Boleslav - 8 studentů
- Kladno - 7 studentů



Je nutné vybrat

1. path a row - Praha má 191 a 25
2. LONG/LAT
3. Procento mraků do 10%
6. Seznam scén, z něhož vybereme data z let 1980 - 2007